

CROSS SELLING: Because Some Things Just Go Together.

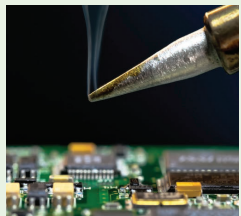
(no puppies were harmed in the making of this reference card)



Chemtronics®

TECHSPRAY®

CROSS SELLING REFERENCE



Hand Soldering

Cross from solder stations, tips & wire solder.

Platoshear
General purpose lead cutter
170 1 cutter, 10/case

170LX Lead Cutter
Ergonomic, ESD safe lead cutter
170LX 1 cutter, 10/case

Flux-Off Rosin
Plastic safe flux remover
ES835B 6 oz. BrushClean System
ES1035 10 oz. aerosol

G3 Flux Remover
Strong and nonflammable
1631-16S 16 oz. aerosol



Soder-Wick Desoldering Braid

Rosin, No-Clean, Lead-Free or Unfluxed

- Soder-Wick Rosin — #2 80-2-5, #3 80-3-5, #4 80-4-5
- Soder-Wick No Clean — #2 60-2-5, #3 60-3-5, #4 60-4-5



CircuitWorks Flux Dispensing Pens

Apply flux with precision and control



CW8100 **No Clean Flux Pen**
0.32 oz.



CW8200 **No Clean Flux Pen**
0.32 oz.

Freeze Spray

Nonflammable diagnostic freeze spray

1672-10S 10 oz. aerosol
1672-15S 15 oz. aerosol



ESD Environment

Cross from ESD bags, bins, mats, straps & benches.

Zero Charge Hand Lotion

Non-contaminating for ESD environments

1702-8FP 8 fl. oz. finger pump bottle

Zero Charge Mat & Tabletop Cleaner

Safe, effective cleaner for ESD mats

1733-QT 1 qt. bottle with trigger sprayer

Static Free Plast-N-Glas

Foaming, static dissipative glass and plastic cleaner

ES1668 14 oz. aerosol



Everyday Items

Every customer can use these!

Nonflammable Duster

Nonflammable duster

1671-10S 10 oz. aerosol
1671-15S 15 oz. aerosol

Ultrajet 70

Big blast nonflammable duster

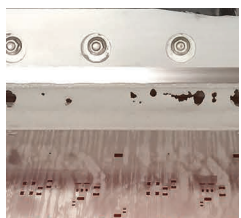
ES1015 10 oz. aerosol

IPA Presaturated Wipes

SIP100P 100 presaturated wipes in pull-up tub, 70% IPA, 30% deionized water

IPA Presaturated Wipes

1610-100DSP Disposable tub, 100 ct. 99.8+% IPA
1610-50PK Individually wrapped, 50 ct.



SMT & Wave Soldering

Cross from paste, bar solder & liquid flux.

WonderMASK P
Non-ammoniated, low odor peelable mask
2211-8SQ 8 fl. oz. squeeze bottle

Chemask Peelable
Fast curing, peelable temporary solder masking agent
CM8 8 fl. oz. squeeze bottle



Isopropyl Alcohol

1608-G4 70% IPA 1 gal.
1610-P 99.8+% IPA 1 pt.
1610-G4 99.8+% IPA 1 gal.
1610-5G 99.8+% IPA 5 gal.



1610-G4

TechClean Wiper

General purpose wipe

2350-100 8"x10" c-fold wipes, double-bagged, 100 ct.

TechClean Purwipe

Low-linting poly wipe

2355-100 9"x9" flat wipes, double-bagged, 100 ct.

